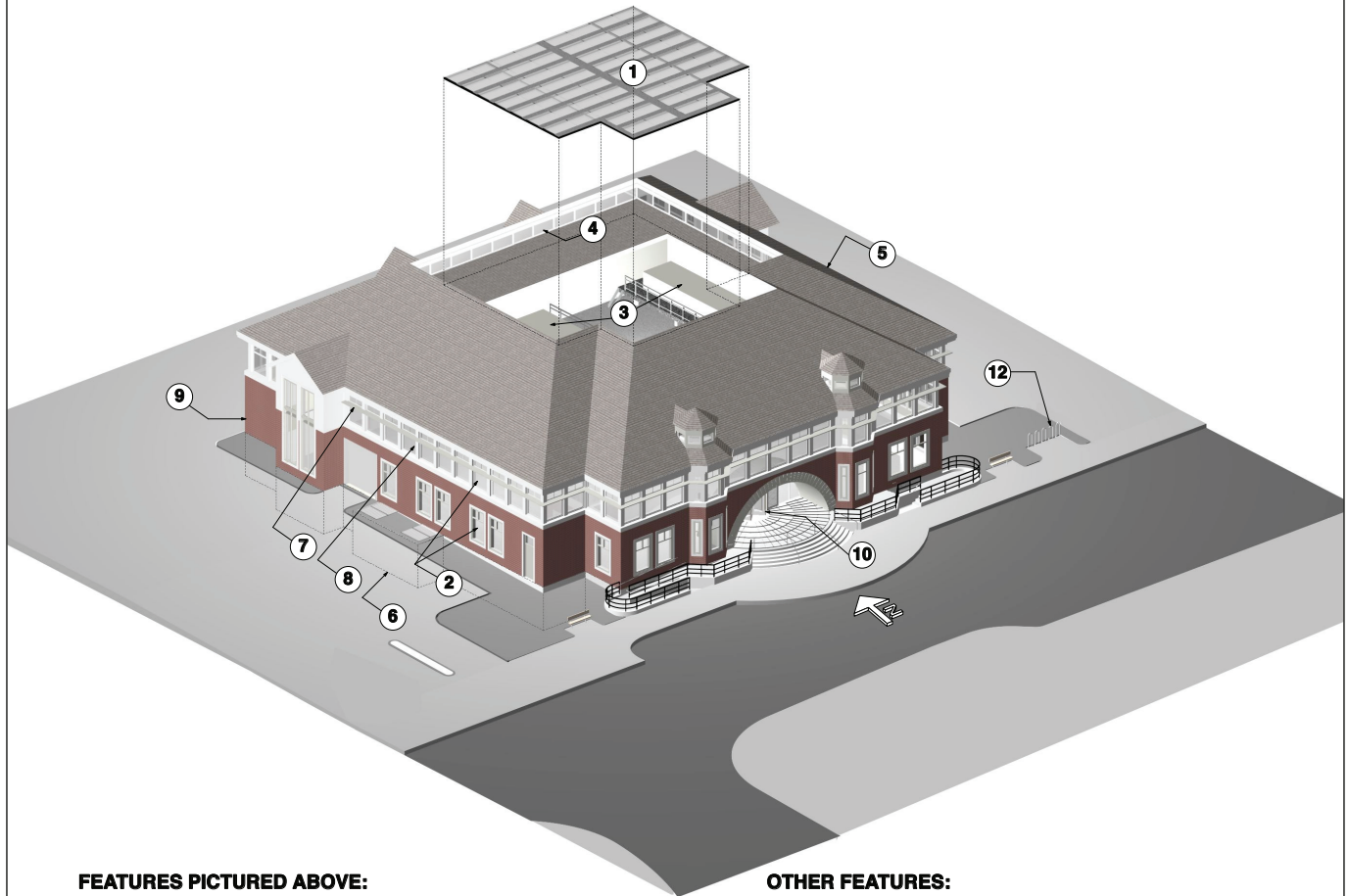


ANATOMY OF A GREEN BUILDING

NEW POLICE AND COURT BUILDING, TOWNSHIP OF MAPLEWOOD, MAPLEWOOD, NJ
THE GOLDSTEIN PARTNERSHIP, ARCHITECTS



FEATURES PICTURED ABOVE:

- ① PHOTOVOLTAIC ARRAY
- ② HIGH PERFORMANCE GLAZING
- ③ HIGH EFFICIENCY HVAC UNITS
- ④ CLERESTORY WINDOWS FOR DAYLIGHT
- ⑤ ENERGY EFFICIENT BUILDING ENVELOPE
- ⑥ UNOCCUPIED SPACES LOCATED IN BASEMENT
- ⑦ EXTERIOR SHELVES TO DISTRIBUTE DAYLIGHT
- ⑧ OCCUPANCY SENSORS CONTROL INDOOR LIGHTING
- ⑨ UNCONDITIONED SPACES ON NORTH SIDE
- ⑩ REVOLVING ENTRANCE DOOR ACTS AS AIRLOCK

OTHER FEATURES:

- ⑪ LOCATED ADJACENT TO BUS ROUTE
- ⑫ BIKE RACKS TO ENCOURAGE BICYCLING
- ⑬ INCORPORATES MATERIALS WITH RECYCLED CONTENT
- ⑭ INCORPORATES MATERIALS MANUFACTURED REGIONALLY
- ⑮ INCORPORATES LOW EMITTING ADHESIVES
- ⑯ INCORPORATES LOW EMITTING PAINTS
- ⑰ INCORPORATES LOW EMITTING CARPETS
- ⑱ PARKING SHARED WITH NEIGHBORING PROPERTY
- ⑲ FUNCTIONS WITH SIMILAR SCHEDULES ARE CLUSTERED
- ⑳ STRUCTURE IS LEFT EXPOSED TO AVOID CEILINGS

WWW.GOLDSTEIN-ARCHITECTS.COM

COPYRIGHT © 2007 BY THE GOLDSTEIN PARTNERSHIP. ALL RIGHTS RESERVED.